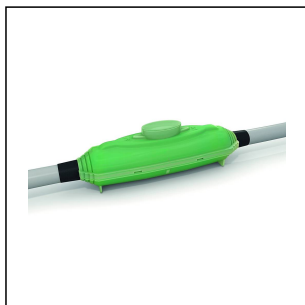


WSJA6

STRAIGHT Series



Products may differ in size, colour and appearance to those shown. If you require further information or customisation, please contact us directly.

| | |
|-----------------------------|---------------------------|
| Filling | Resin |
| Voltage | 0,6 kV - 1 kV |
| Ø cable diameter min | 45 mm |
| Ø cable diameter max | 73 mm |
| Terminals/poles | 120 - 300 mm ² |
| Quantity of cable | 4 |
| Type | WSJA6 |
| UK-Number | WSJA6 |
| WISKA-Order no. | 10106387 |
| Packing unit | 1 |

Remarks:

Cores: 4

Shelf life: 3 years

IP X8

Description:

SUBMARINE Straight Series allowing jointing of .6/1 kV single and multicore cables. Kit includes 2 transparent half-shells, 2 component resin, Direct Injection casting system allowing pre-mixed resin to be injected inside the joint, modular phase separator, earthing braid and constant force roll springs.

Additional Info:

Perfect for overhead, underground and underwater installations as well as public lightning systems. Excellent electrical insulation and mechanical strength. Available with final solid state (green) and re-enterable resin (yellow).

17.06.2024

Your Contact:

WISKA UK Ltd.

Unit 7, Hurling Way · St. Columb Major Business Park · TR9 6SX, St. Columb Major, Cornwall · Great Britain

☎ +44-12-08816062 · 📠 +44-12-08816708

info@wiska.co.uk · www.wiska.co.uk